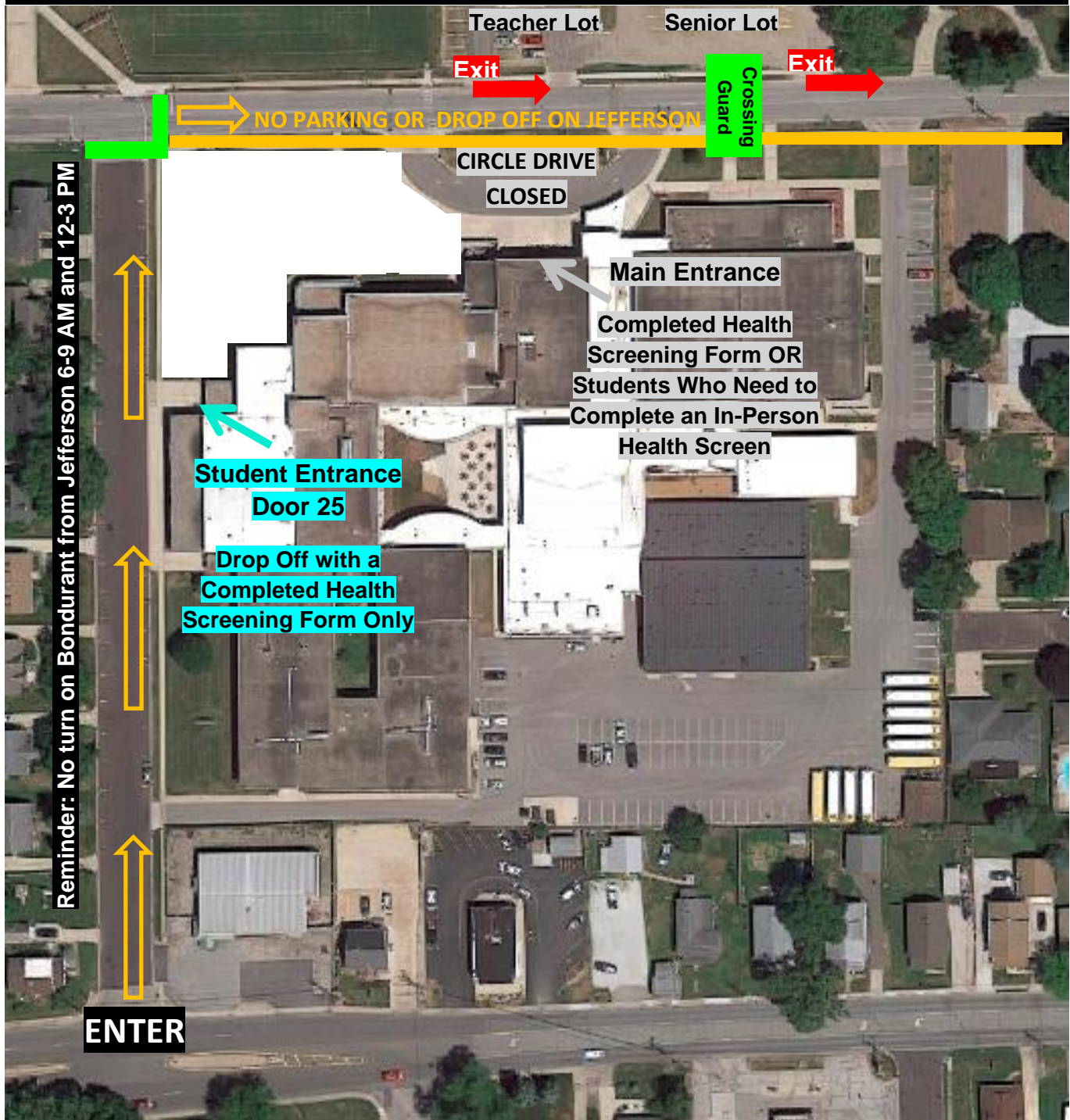


TRAFFIC FLOW FOR STUDENT DROP OFF/PICK UP AND PARKING LOT EXIT



- Student drop off and pick up will be on Bondurant Street only.** Traffic will enter from Peoria Street, and it is suggested to turn right on Jefferson Street upon exit. No parking or drop off on Jefferson Street. The circle drive in front of the school will be closed for the safety of students waiting near the main entrance or changing between morning/afternoon session.
- Students must enter through Door 25 when dropped off on Bondurant unless directed to the front for additional health screening.**
- Teacher/staff and students exiting the parking lots must turn left on Jefferson Street.**
- Crossing guard across from Torry Gym or students cross on their own at Jefferson and Bondurant.**